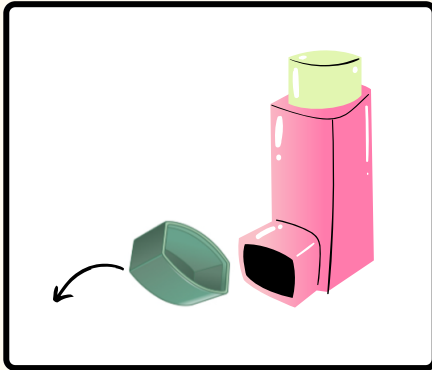
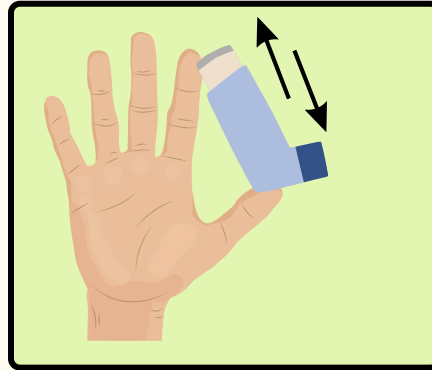


REMOVE CAP



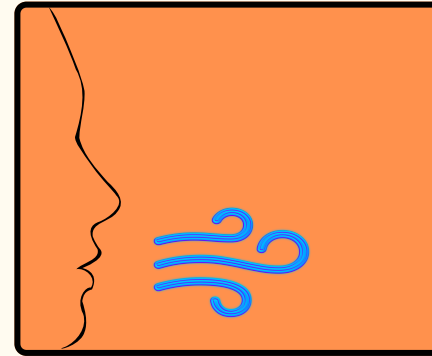
Remove the cap and make sure there is nothing on the mouthpiece of the inhaler.

SHAKE INHALER



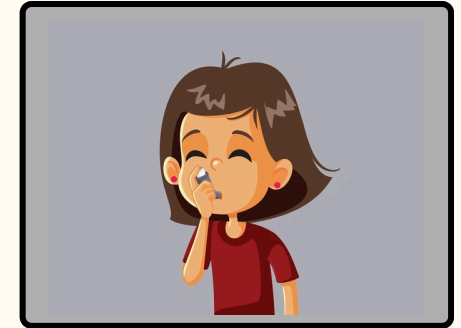
Shake the inhaler 10-15 times to mix the medicine .

BREATHE OUT



Exhale. Turn head away from the device and breathe out fully.

CLOSE MOUTH AROUND INHALER



Place the mouthpiece between your teeth and lips to form a tight seal.

BREATHE IN SLOWLY



As you start to **breathe** in slowly, **press down** inhaler once and breathe in for 3-5 seconds.

HOLD YOUR BREATH



Take the inhaler out of your mouth and **hold** your breath for 10 seconds.

EXHALE SLOWLY



Once again, **breathe out** away from the device. If you take another puff, wait 1-2 minutes.

PUT CAP BACK ON



Place the cap back on the mouthpiece and make sure it is closed tightly. You're all done!